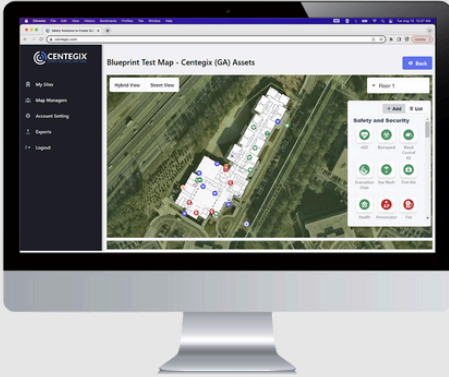




Maryland School Safety Funds: School Mapping Data Program



Passed on March 29, 2024, **Maryland HB 0472** funds critical incident mapping technology in schools. This legislation establishes a School Mapping Data Program to provide funds to local school systems for school mapping data. The purpose of these maps is to assist first responders in responding to emergencies in schools.

CENTEGIX Safety Blueprint™ meets and exceeds the requirements for funding critical incident mapping in schools.

CENTEGIX Safety Blueprint™

CENTEGIX Safety Blueprint™ is digital critical incident mapping for emergency response.

Digital campus and asset maps streamline communication and response time for schools, healthcare and government facilities, and commercial businesses and workplaces in emergencies—from the everyday to the extreme. **CENTEGIX offers the most effective and comprehensive school safety system on the market.**



Dynamic Digital Mapping

Reduce incident response time. Know the precise location of an incident and where to find the closest life safety devices.



Engage Cameras

Understand the severity of an incident. Engage cameras at the location of the event to observe an emergency unfold in real time.



Location Accuracy

Know where safety equipment and assets are physically located at any time without digging through multiple spreadsheets.



Includes Layers

Expand capabilities to include additional map layers and related assets to serve IT and facilities needs.



Updating Maps in an Instant

Publish floor plan changes yourself, anytime. Eliminate the wait and expense of engaging an outside group to redraw maps.



Exceeds Requirements

Meet—and exceed—Maryland’s legislative requirements for maintaining critical incident maps.



@_Centegix



@Centegix



Centegix



centegix.com

Maryland School Safety Solutions

Through our market-defining **rapid response system**, CENTEGIX uses innovative technology to empower schools, hospitals, hotels, and workplaces across the U.S., providing peace of mind and saving lives in the process.

CENTEGIX Safety Blueprint™ provides digital campus and asset maps to **streamline communication and response time** for schools in emergencies—from the everyday to the extreme. This intelligent response mapping solution helps you optimize incident response, safety planning, and visitor management.



Safety Blueprint™:

- ✓ Stores your evacuation maps for ready access.
- ✓ Plots your reunification points.
- ✓ Allows you to access critical infrastructure and assets including utility rooms, fire extinguishers, fire alarms, first aid kits, AEDs, and gas shut-off valves.
- ✓ Collaborates with safety experts, emergency responders, and department heads to develop a comprehensive emergency preparedness plan.
- ✓ Helps familiarize staff with the building's layout and safety equipment locations.

Districts prefer Safety Blueprint™

“The minute we receive a map in an architectural drawing or PDF is the minute it is out of date! If I have to call an architect or vendor to update maps, I waste time and money. CENTEGIX's Safety Blueprint is the best of both worlds: we can make updates in real-time, and we don't have to spend money every time we make a change, like consolidating rooms or adding a mobile classroom.

- Florida District Chief Operations Officer

[LEARN MORE](#)



@_Centegix



@Centegix



Centegix



centegix.com